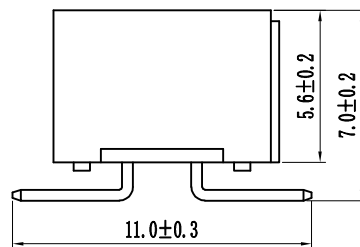
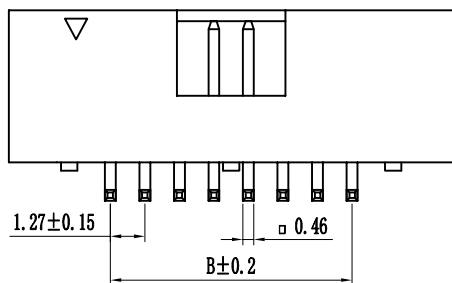
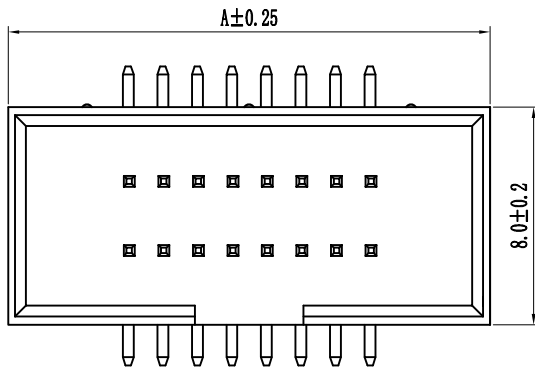
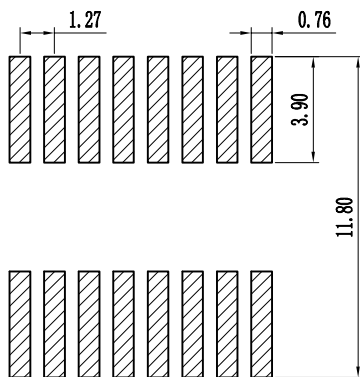


环保物料

Pin数	尺寸A	尺寸B
2x5	13.9	6.35
2x6	15.17	7.62
2x7	16.44	8.89
2x8	17.71	10.16
2x9	18.98	11.43
2x10	20.25	12.70
2x11	21.52	13.97
2x12	22.79	15.24
2x13	24.06	16.51
2x14	25.33	17.78
2x15	26.60	19.05
2x16	27.87	20.32
2x17	29.14	21.59
2x18	30.41	22.86
2x19	31.68	24.13
2x20	32.95	25.40
2x21	34.22	26.67
2x22	35.49	27.94
2x23	36.76	29.21
2x24	38.03	30.48
2x25	39.30	31.75
2x26	40.57	33.02
2x27	41.84	34.29
2x28	43.11	35.56
2x29	44.38	36.83
2x30	45.65	38.10
2x31	46.92	39.37
2x32	48.19	40.64
2x33	49.46	41.91
2x34	50.73	43.18
2x35	52.00	44.45
2x36	53.27	45.72
2x37	54.54	46.99
2x38	55.81	48.26
2x39	57.08	49.53
2x40	58.35	50.80
2x41	59.62	52.07
2x42	60.89	53.34
2x43	62.16	54.61
2x44	63.43	55.88
2x45	64.70	57.15
2x46	65.97	58.42
2x47	67.24	59.69
2x48	68.51	60.96
2x49	69.78	62.23
2x50	71.05	63.50



PCB LAYOUT



Specification:

Current Rating : 1AMP

Temperature Range : -40°Cto+105°C

Contact Resistance : 20mΩ Max

Insulation Resistance : 1000MΩ Min

Withstanding Voltage : AC 500V

Material:

Insulator : Polyester (UL94V-0)

Standard:PA6T/LCP

Contact: Brass

Plating : Au or Sn Over 50u" Ni

B 12 9S-XXX X X-XX-X-XXX  
① ② ③ ④ ⑤ ⑥ ⑦ ⑧ ⑨

① Series No:	② Pitch:	③ Tail/Mounting Style:	④ No. of Pins:	⑤ Insulator Color:
P=Pin Header	08-0.80	9D-Right Angle DIP Type	Single Row Double Row	A:Black B:Brown C:Red
F=Female Header	10=1.00	9S-Straight SMT Type	101=1*1Pin 201=2*1Pin	D:Orange E:Yellow F:Green
B=Box Header	12=1.27	0D-Straight DIP Type	102=1*2Pin 202=2*2Pin	G:Blue H:Violet J:Gray
E=Ejector Header	20=2.00	0S-Horizontal SMT Type	i i i i	K:White P:Light Blue
	25=2.54		140=1*40pin 240=2*40pin	
	39=3.96			
	50=5.08			

⑥ Material Type:	⑦ Plating Type:	⑧ RoHS Request:	⑨ Customer Code
A-PBT	0*-Sn-Au 1*-Ni 2*-Sn 3*-Matte-Tin 5*-Au	0:No Request	
B-PA66	0A-Sn-Au 1u" 0F-Sn-Au 10u" 5A-Au 1u"	1:RoHS	
C-PA6T	0B-Sn-Au 2u" 0G-Sn-Au 15u" 5B-Au 2u"	2:HF (Halogen Free)	
D-PA9T	0C-Sn-Au 3u" 0H-Sn-Au 30u" 5C-Au 3u"		
E-LCP	0D-Sn-Au 4u" 0I-Sn-Au 40u" i		
	0E-Sn-Au 5u" 0J-Sn-Au 50u" 5J-Au 50u"		

		GENERAL TOLERANCES		SCALE:	NAME	DATE
		LINEAR	ANGLES	1:1	黎腾	2017.06.16
		0.00±0.15	X° REF±6°	APPROVED	肖坤权	2017.06.16
REV.	REVISION RECORD	DATE	SIZE: A4	DESIGNER	旷淇	2017.06.16
				DRAWN		

康导新能源  
网址: www.dgonne.com 电话: 0760-8537533  
邮箱: 2950178908@qq.com 传真: 0760-8538287

PART. NO:	KDBH-0012
DWG. NO:	ENDE2012
REV:	AO
SHEET:	1/1

TITLE:  
1.27\*2.54mm Box Header, Dual Row,  
Plastic Height 5.6mm, SMT Type